



DWIGHT L. STEWART, JR. AND ASSOCIATES, LLC
CONSULTING FORESTERS
26 E. BOYCE STREET
MANNING, SOUTH CAROLINA 29102
(803) 435-2301

REGISTERED FORESTER
DWIGHT L. STEWART, JR.
G. WARD GATLIN

REAL ESTATE
ROBERT GIDDENS, CGRE
J. STEPHEN LINCOLN

LAND FOR SALE

Stukes Tract

LOCATION: CLARENDON COUNTY
TAX MAP # 144-00-02-017-00

ACREAGE SUMMARY: 20.5 +/- acres wooded
12.0 +/- acres cropland
32.5 +/- acres

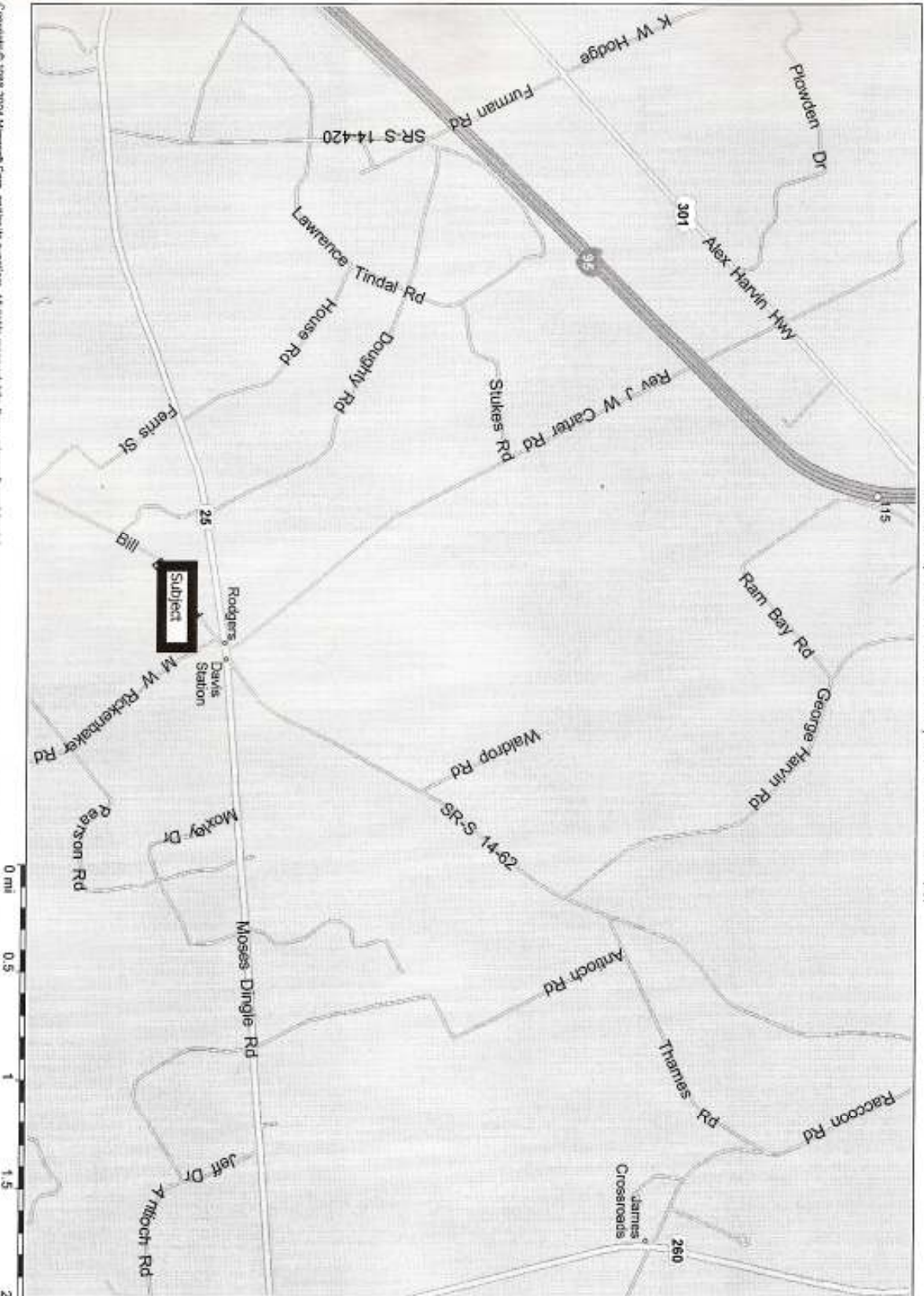
FINANCIAL TERMS: Cash at Closing

SALES PRICE: \$162,500

COMMENTS: Tract is located in Davis Station near Lake Marion. Investment potential in Lake Marion area with high traffic volume.

The above information is considered correct, but is not guaranteed. Acreage information was taken from existing plats and tax assessor's records. Buyer should have a routine title examination performed by an attorney. Dwight L. Stewart, Jr. is a licensed real estate broker representing the seller.

South Carolina, United States, North America

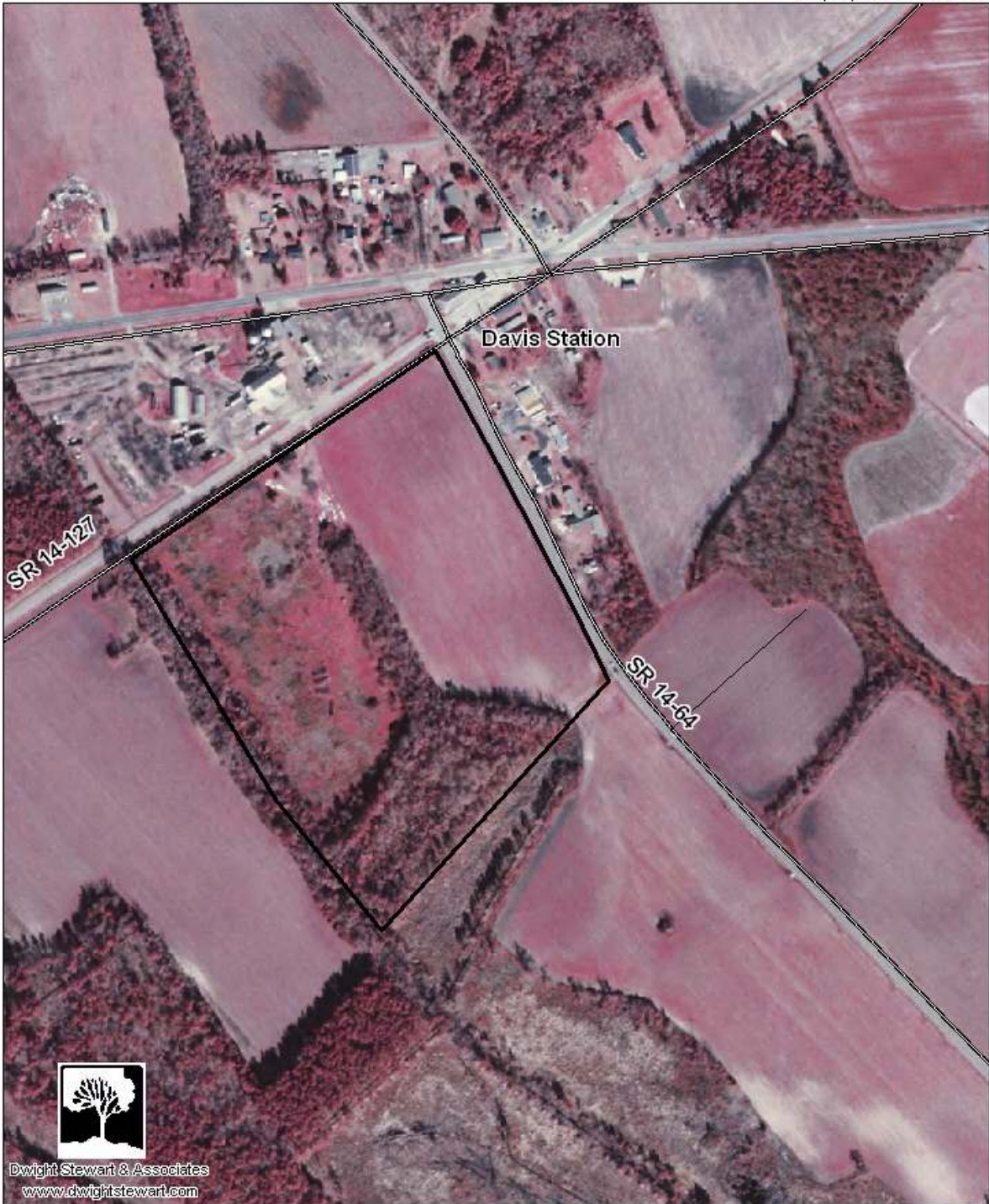


Copyright © 1998-2004 Microsoft Corporation. All rights reserved. http://www.microsoft.com/choice
© Copyright 2003 by Geographic Data Technology, Inc. All rights reserved. © 2004 NAVTEQ. All rights reserved. This data includes information taken with permission from Canadian authorities © Her Majesty the Queen in Right of Canada



Stukes Tract Clarendon County, SC

1 inch = 400 feet
06' photo
July 2, 2010
Property lines are not exact.



Dwight Stewart & Associates
www.dwightstewart.com