



DWIGHT L. STEWART, JR. AND ASSOCIATES, LLC
CONSULTING FORESTERS
26 E. BOYCE STREET
MANNING, SOUTH CAROLINA 29102
(803) 435-2301

REGISTERED FORESTERS

DWIGHT L. STEWART, JR.

G. WARD GATLIN

REAL ESTATE

ROBERT V. GIDDENS, CGRA

LAND FOR SALE

Black Land & Timber Tract

LOCATION: Clarendon County, SC
Tax Map #120-00-01-023

ACREAGE SUMMARY: 25.88 Acres - All wooded w/1yr. old
Loblolly pine

SALES PRICE: \$52,000.00

FINANCIAL TERMS: Cash at Closing

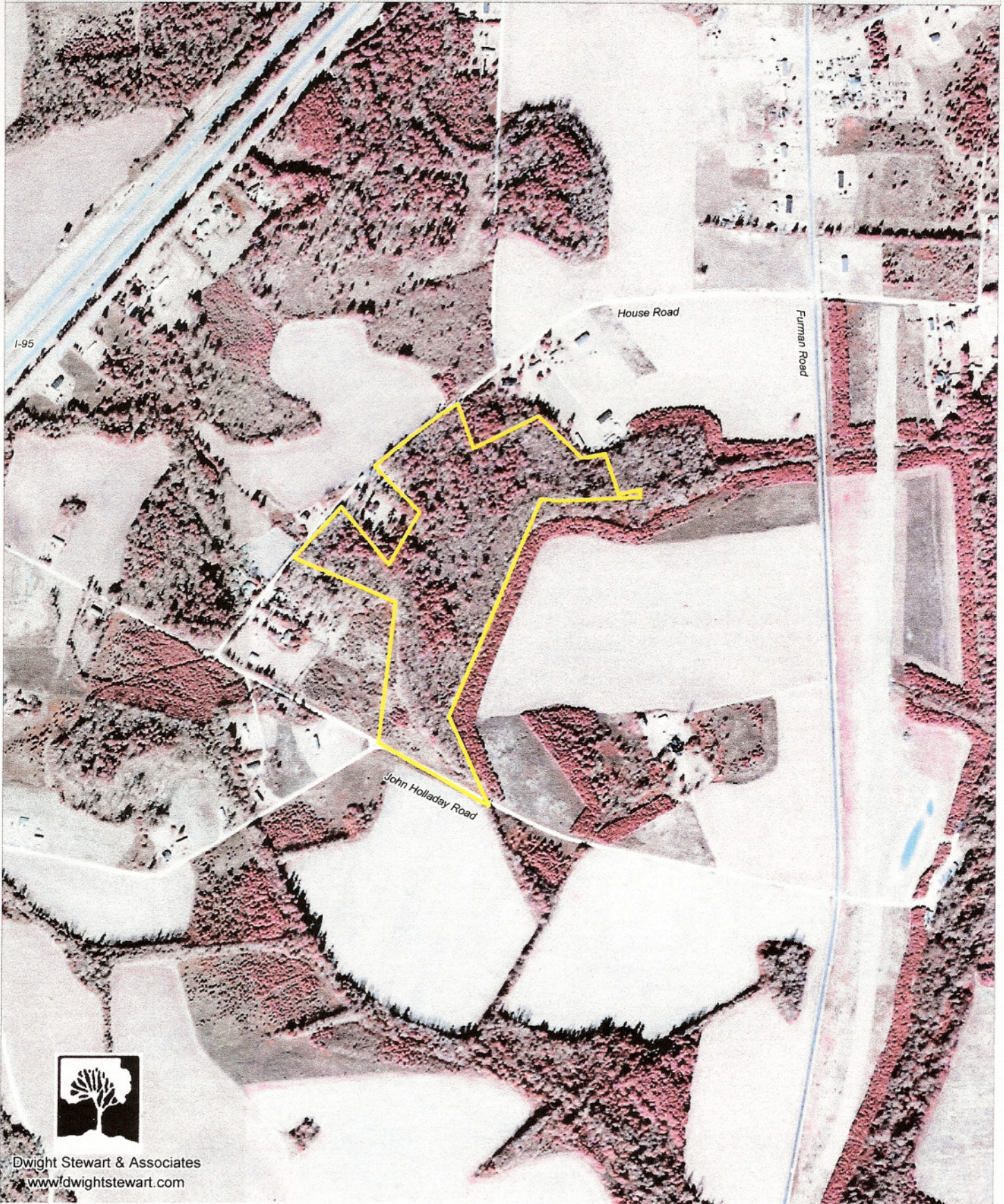
COMMENTS: The Black tract is all planted pines. The tract has frontage on 2 unpaved roads and is near Summerton. This is an excellent small tract for hunting and a timberland investment.

The above information is considered correct, but is not guaranteed. Acreage information was taken from existing plats and tax assessor's records. Buyer should have a routine title examination performed by an attorney. Dwight L. Stewart, Jr. is a licensed real estate broker representing the seller.



Black Land & Timber Tract
Clarendon County, SC
Tax map parcel 120-00-01-023

1 inch = 660 feet
Prop. Lines are approx.
2006 DNR flight
July 18, 2011



Dwight Stewart & Associates
www.dwightstewart.com